

# Neighborhood News

City of Bellevue

News for and about Bellevue Neighborhoods

February 2010

## Neighborhood matching grant deadline coming up

If you have ideas for small projects to improve the appearance of your neighborhood, now is the time to rally your neighbors and translate those ideas into reality. The City of Bellevue Neighborhood Match Program is accepting applications for 2010 funding from now until March 15.



To be considered for funding, the neighborhood must contribute 50 percent of the project cost in cash, donated professional services, materials or volunteer labor. For more information, to discuss your project ideas, or to get help with the application process, contact Patricia Knight at 425-452-7917 or [pknight@bellevuewa.gov](mailto:pknight@bellevuewa.gov). Project guidelines and application forms can be downloaded from the web site, [http://www.bellevuewa.gov/neighborhood\\_match\\_program.htm](http://www.bellevuewa.gov/neighborhood_match_program.htm).

## Diverse East Bellevue women gather to make connections

Tea and conversation created camaraderie for 28 eastside women anxious to break down cultural barriers and connect with their neighbors on Tuesday, Jan. 26. The get-together was organized by Barb Tuininga, Crossroads Mini City Hall Coordinator, who explained the impetus for the gathering:

“In helping women at Mini City Hall and out in the community, I’m constantly amazed by the need women express that they want to connect and find a sense of community.”



After being approached about the community’s interest in promoting cultural connections among women, the City responded by approaching faith based organizations in East Bellevue neighborhoods and inviting them to participate in an informal tea and cultural conversation. Women attended from the Christian, Jewish, Hindu, Bahai and Islamic communities, representing a large diversity of countries and languages. Some arrived with ideas on how to connect, some came with only curiosity, but all left with a feeling of warmth and a sense of commonality with women of different cultures and faiths.

Anxious to explore a variety of community service, cooking, storytelling and craft projects that would help foster cultural understanding and connections among women in the Eastside community, the group plans to gather again next month. If you are interested in joining future gatherings, contact Barb Tuininga at 425-452-2800.



## *Building Blocks for Neighborhood Projects* How-to guide now available on city website

A new resource guide, customized for neighborhood project planning, is now available to assist Bellevue neighborhoods with the organization of neighborhood projects. The new on-line tool is available at

[http://www.bellevuewa.gov/pdf/Neighborhoods/Building\\_Blocks\\_How\\_To\\_Guide.pdf](http://www.bellevuewa.gov/pdf/Neighborhoods/Building_Blocks_How_To_Guide.pdf). The resource guide includes topics such as project organization, holding effective meetings, budgeting, timelines, marketing,

outreach, sponsorships, evaluation and more. For personal assistance with neighborhood project planning and access to resources, contact Neighborhood Outreach at 425-452-6836.

## Bring the richness of art into your neighborhood

Public art is an important expression of community life. The Public Art in Neighborhoods Program (PAN) is the City's new initiative to improve quality of life by creating public art in neighborhoods. As a joint effort of the City and neighborhoods, PAN centers on collaboration and partnership between artists and residents to create artworks that are neighborhood oriented, with artistic merit and community value.

Newport Hills/Lake Heights and Bridle Trails are the first participating neighborhoods for the program. A panel of neighborhood residents, artists and the Arts Commission started the process last year. Interestingly, artist Bruce Myers was chosen by both neighborhoods among 12 artists who participated in the selection process. Both groups admired Myers' sensitive response to the natural environment.

A preliminary concept for bus shelter treatments and gateway in the Newport Hills/Lake Heights neighborhood is being developed. Plans are underway to share some alternative concepts with residents in late February or early March. As for Bridle Trails, the artist is working on an equestrian-oriented concept to reflect the neighborhood's rich character and history. A community meeting to review the initial art concept alternatives for Bridle Trails is scheduled for Feb. 10, 7:00 p.m. at the Cherry Crest Elementary School Library, 12400 NE 32nd. The meeting is open to the public and neighbors are encouraged to attend and share their opinions.

If you are interested in learning more about the PAN, please visit the City website at [http://www.bellevuewa.gov/neighborhood\\_art.htm](http://www.bellevuewa.gov/neighborhood_art.htm). The program coordinator, Art Specialist Mary Pat Byrne, also can be reached at 425-452-4105 or via email [MPByrne@bellevuewa.gov](mailto:MPByrne@bellevuewa.gov)

## Learn about Wilburton Connections at early March open house

An open house from 4 to 7 p.m. on Tuesday, March 2, will present plans for the Wilburton Connections projects – a group of high priority transportation projects located on the western edge of the Wilburton area, just east of I-405.

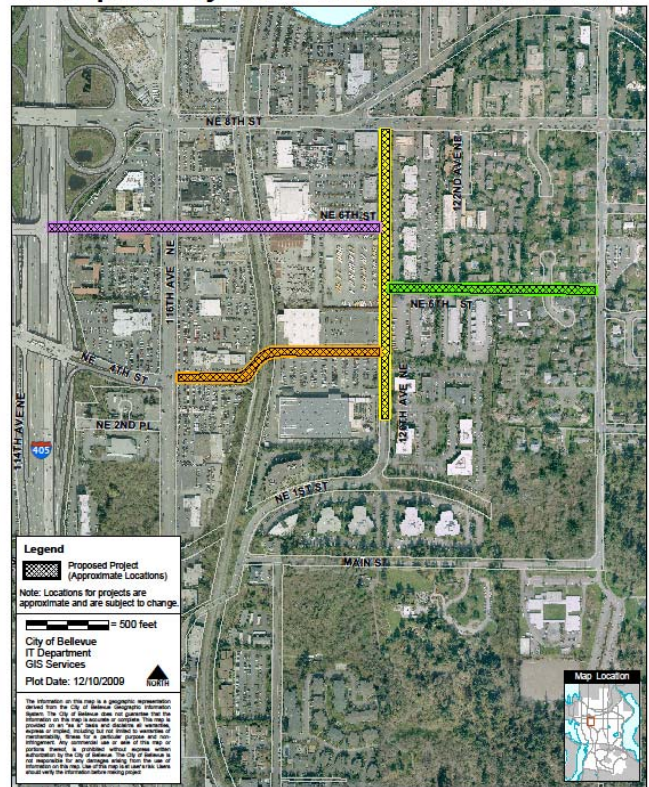
The projects include:

- NE Fourth Street Extension, from 116th to 120th Avenue NE;
- NE Sixth Street Extension, from I-405 to 120th Avenue NE;
- 120th Avenue NE Widening, from the 300 to the 700 block; and
- The NE Fifth Street Neighborhood Traffic Assessment.

The projects are designed to support increased access between Wilburton, downtown Bellevue and the Bel-Red area. At the March 2 open house, scheduled for the first-floor concourse of City Hall, participants can get project information, ask questions, offer comments and express concerns.

For more information, visit the project website at [www.bellevuewa.gov/wilburton-connections.htm](http://www.bellevuewa.gov/wilburton-connections.htm) or call 425-452-4638.

### Conceptual Layout for Wilburton Connections



## 'Braids' work to close lanes on NE 12<sup>th</sup> Street bridge

The state Department of Transportation (WSDOT) plans to close two of the four lanes on the NE 12<sup>th</sup> Street bridge over Interstate 405 in mid-to late February as construction work begins on the long-awaited Bellevue Braids project.

Traffic will be restricted to one lane in each direction, from 112<sup>th</sup> NE to 116<sup>th</sup> NE for the next two years. During that time, WSDOT's contractor, Guy F. Atkinson Construction LLC, will build half of the new bridge just south of the existing one, then shift two travel lanes to the new bridge before demolishing the old one in 2011. The new four-lane bridge will include a wider sidewalk and a shared-use trail, with bike lanes, separated from vehicle traffic.

Travelers should expect delays crossing the two-lane bridge through the construction area and are urged to use caution. Drivers should consider using alternative routes, such as the newly completed NE 10<sup>th</sup> Street bridge. The Bellevue Braids project is designed to reduce congestion and improve safety at the I-405 to SR 520 interchange, one of the state's busiest. Work includes building multi-level "braided" ramps to separate northbound vehicles entering and exiting I-405 between NE Eighth Street and SR 520. The project is scheduled for completion in summer 2012. For more project information online, visit <http://www.wsdot.wa.gov/projects/i405/ne8thtosr520/>

## Tank project to slow traffic on W. Lake Sammamish Parkway SE

Motorists near the 3700 block of West Lake Sammamish Parkway SE should expect increased traffic congestion and possible delays during the month of February as workers replace an underground fuel tank at the Sunset Pump Station.

King County Wastewater Treatment Division contractors will begin excavation work in the parking lot of the pump station, at 3730 West Lake Sammamish Parkway SE, in early February. Construction hours typically will be weekdays from 7 a.m. to 4 p.m. and Saturdays from 9 a.m. to 6 p.m. Drivers, bicyclists and pedestrians should avoid the area if possible or use caution if passing by the work site. The new larger fuel tank, needed to run an emergency generator when electricity is lost, replaces a smaller tank and will increase the backup power capacity from eight hours to 24 hours. For more information contact Doug Marsano at 206-423-0480 or [doug.marsano@kingcounty.gov](mailto:doug.marsano@kingcounty.gov).

## Events committee seeks neighborhood help

If you live north of I-90 and west of I-405, and you're interested in an enjoyable and important activity on Thursday mornings, the City's Special Events Committee Chairman wants to talk to you!

Two neighborhood positions are open on the Special Events Committee, which reviews event applications to make sure large community events are safe, environmentally friendly, properly staffed and supervised, and compliant with city laws and standards. The committee meets twice a month, from 8:30 to 10 a.m. in City Hall. For more information, see [http://bellevuewa.gov/special\\_events\\_committee\\_info.htm](http://bellevuewa.gov/special_events_committee_info.htm) or contact Jon Wilson, Community Services Supervisor, at 425-452-4278.

## February meetings

*(All meetings are in City Hall unless otherwise noted. Agendas are subject to change. You may confirm with Neighborhood Outreach the day before or day of the meeting. Or consult the city web pages listed below to download agendas.)*

**2/1 City Council** (6:00 study session, Council Conference Room) Cultural Diversity Task Force Report update discussion, Eastgate Area Properties Master Plan review, amendments to City Electrical Code (8:00 regular session, Council Chambers) Management Brief on completion of work on the Meydenbauer Bay Park and Land Use Plan, Management Brief on initiation of the Eastgate/I-90 Land Use and Transportation Update, Management

Brief pertaining to King County 2009 Draft Comprehensive Solid Waste Management Plan, purchase of parks properties [http://www.bellevuewa.gov/council\\_overview.htm](http://www.bellevuewa.gov/council_overview.htm)

**2/2 Arts Commission** (4:00, 1E-109) Meydenbauer Bay Park and Land Use Plan process, Parks and Open Space Plan update, discussion of coming budget process for the next biennium and Bellwether 2010: Art Walk Bellevue [http://www.bellevuewa.gov/arts\\_comm.htm](http://www.bellevuewa.gov/arts_comm.htm)

**2/2 Human Services Commission** (6:30, Council Conference Room) Bellevue Volunteer Program, 2011-2012 funding strategies [http://www.bellevuewa.gov/human\\_serv\\_comm.htm](http://www.bellevuewa.gov/human_serv_comm.htm)

**2/2 East Bellevue Community Council** (6:30, Lake Hills Clubhouse, 15230 Lake Hills Blvd) Reports of City Council, Boards and Commissions, department reports, committee reports, It's Our Community discussion [http://www.bellevuewa.gov/EBCC\\_Homepage.htm](http://www.bellevuewa.gov/EBCC_Homepage.htm)

**2/4 Environmental Services Commission** (6:30, 1E-112) Election of Chair, Stream Team update, "Budget One" Overview & Financial Policies Review [http://www.bellevuewa.gov/enviro\\_serv\\_comm.htm](http://www.bellevuewa.gov/enviro_serv_comm.htm)

**2/4 Bellevue Network on Aging** (8:30 a.m., 1E-112) Committee reports, Community Partnerships Report [http://www.bellevuewa.gov/network\\_on\\_aging.htm](http://www.bellevuewa.gov/network_on_aging.htm)

**2/4 Public Hearing on proposed downtown helistop** (1:00 p.m., Council Chambers) Continued remand hearing before the Hearing Examiner on Kemper Development conditional use application to permit a private-use helistop on the roof of the Bellevue Place Bank of America building, 800 Bellevue Way NE. (Testimony is limited to the applicant, appellants, the city, and their witnesses on the subject of FAA review of the proposal.)

**2/8 City Council** (6:00 extended study session, Council Conference Room) Agenda to be announced [http://www.bellevuewa.gov/council\\_overview.htm](http://www.bellevuewa.gov/council_overview.htm)

**2/9 Parks & Community Services Board** (6:00, Council Conference Room) Agenda to be determined [http://www.bellevuewa.gov/parks\\_board.htm](http://www.bellevuewa.gov/parks_board.htm)

**2/10 Bridle Trails Public Art Community Meeting** (7:00, Cherry Crest School, 12400 NE 32<sup>nd</sup> St.) Review of public art concept for the Bridle Trails neighborhood [http://www.bellevuewa.gov/neighborhood\\_art.htm](http://www.bellevuewa.gov/neighborhood_art.htm)

**2/15 President's Day – All city offices closed**

**2/16 City Council** (6:00 study session, Council Conference Room) Agendas to be announced (8:00 regular session, Council Chambers) [http://www.bellevuewa.gov/council\\_overview.htm](http://www.bellevuewa.gov/council_overview.htm)

**2/18 Human Services Commission** (6:30, 1E-113) Briefing on affordable housing [http://www.bellevuewa.gov/human\\_serv\\_comm.htm](http://www.bellevuewa.gov/human_serv_comm.htm)

**2/22 City Council** (6:00 extended study session, Council Conference Room) [http://www.bellevuewa.gov/council\\_overview.htm](http://www.bellevuewa.gov/council_overview.htm)

**2/24 Planning Commission** (6:30, Council Conference Room) Comprehensive Plan Amendment applications and Enatai Tree Preservation Study [http://www.bellevuewa.gov/planning\\_commission.htm](http://www.bellevuewa.gov/planning_commission.htm)

**2/25 Transportation Commission** (6:30, Council Conference Room) Budget One overview, Meydenbauer Bay Park update [http://www.bellevuewa.gov/trans\\_comm.htm](http://www.bellevuewa.gov/trans_comm.htm)

**Agendas for the City Council's Feb. 8, 16 and 22 meetings were not available for this publication. Please check the Council web site or call Neighborhood Outreach, 425-452-6836, on the Friday prior to the meeting for more complete information.**

---

Bellevue's Neighborhood Outreach Office offers a variety of programs and partnerships for neighborhood leaders and active residents. To learn more about citizen involvement opportunities and programs to enhance neighborhoods, call 452-6836.