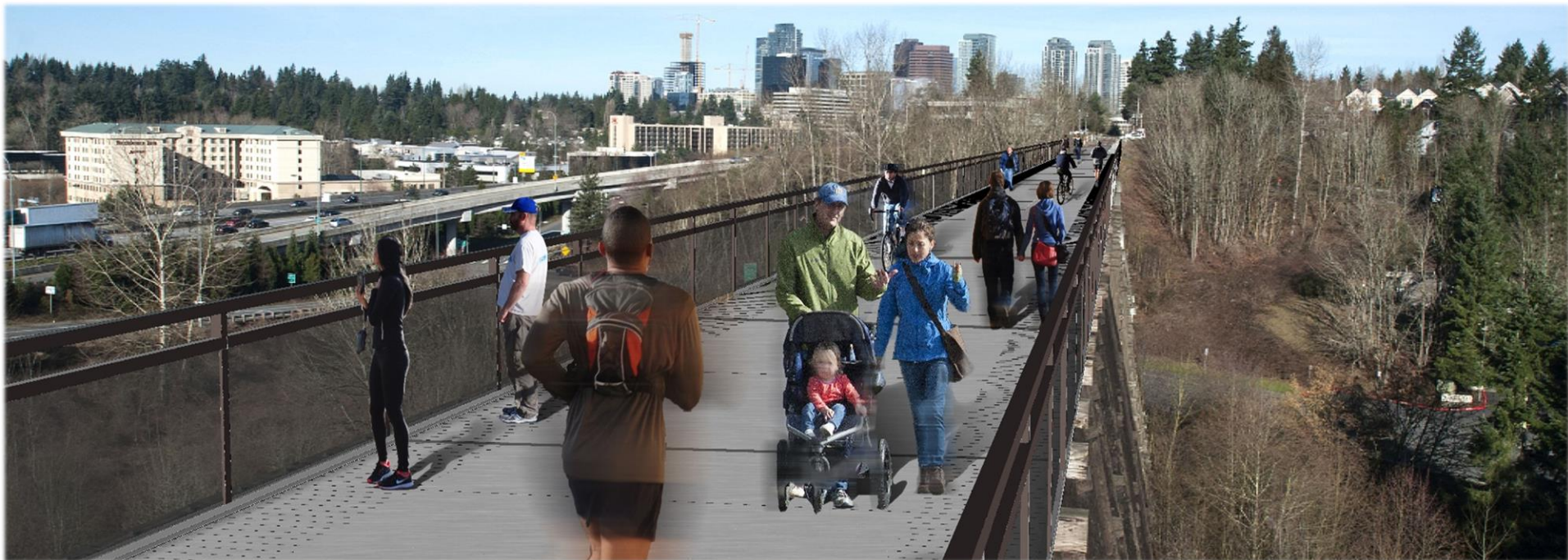


Eastside Rail Corridor Regional Trail

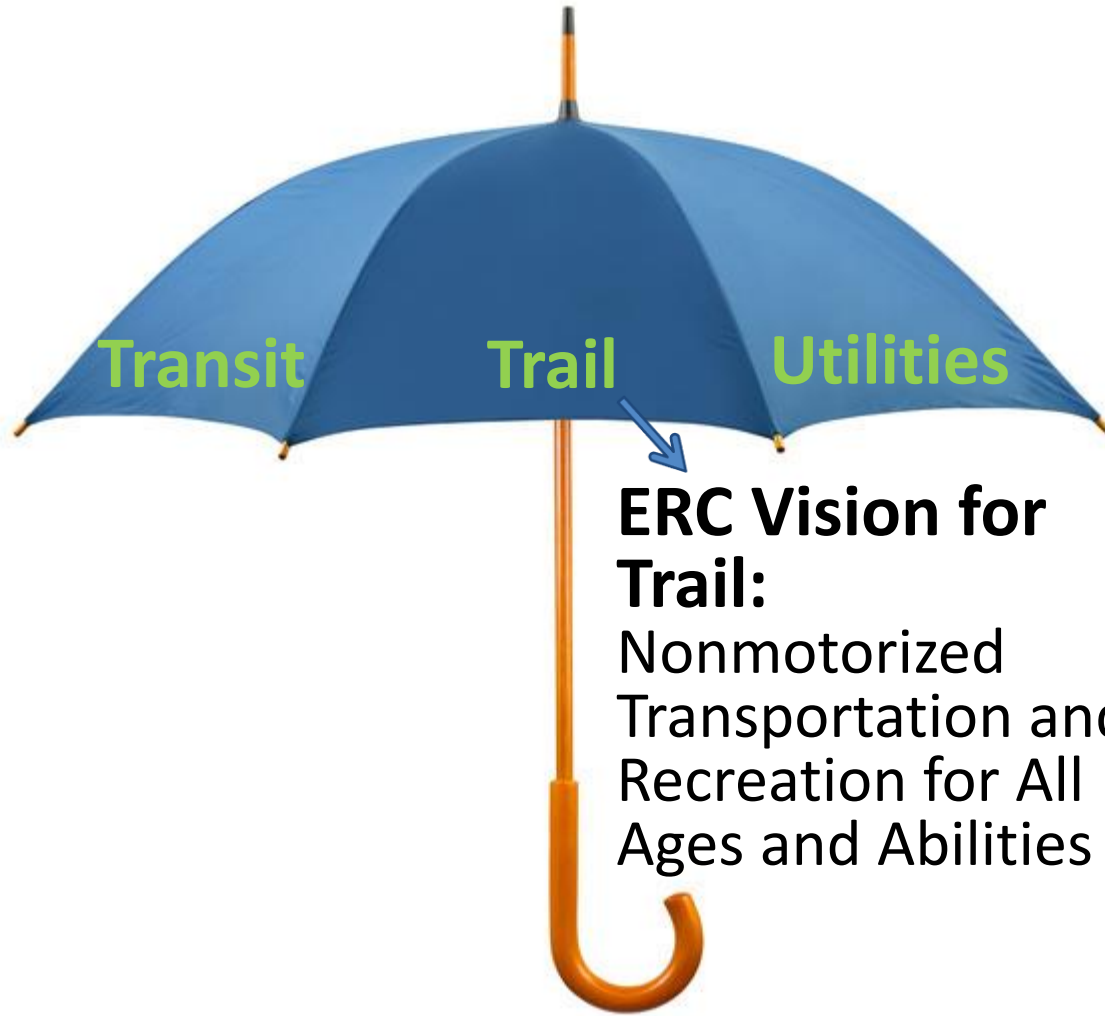
2018 Bellevue Neighborhoods Conference



Workshop Agenda

- 2:10pm— Welcome – Orientation to Session
- 2:15-2:35— PowerPoint presentation
- 2:35 – 2:50—General Questions Answered at Wall Maps
- 2:50-3:10—Feedback at breakout stations
 - Where you live, how you would like to access the trail*
 - Station 1: Kirkland to NE 12th St
 - Station 2: NE 12th St to I-90
 - Station 3: I-90 to Renton
 - Station 4: What is the trail like? Trail design, trailheads & connections
- 3:10-3:15—Wrap up

ERC Vision for Corridor



ERC Vision for Trail:

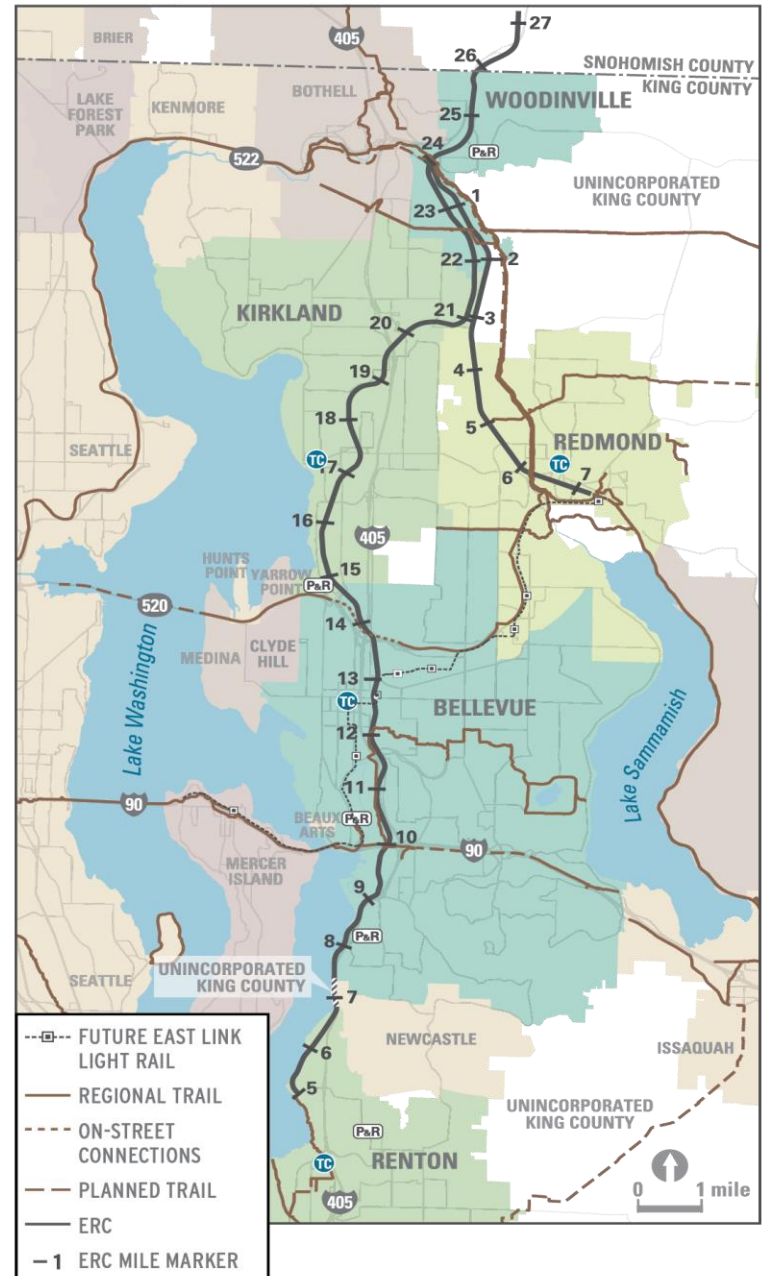
Nonmotorized Transportation and Recreation for All Ages and Abilities



Connecting the Eastside-Trails, homes, jobs, transit

- ERC links existing and regional trails
- A continuous network serving over 350,000 residents within Eastside, and over 1 million when considering connections across the lake
- Core business districts of Renton, Bellevue, Kirkland, Woodinville, and Redmond
- Transit connections:
 - East Link Light Rail at Wilburton and Spring District
 - Rapid Ride on NE 8th Street
 - South Kirkland P&R

REGIONAL TRAIL CONNECTIONS



King County ERC Trail Master Plan



EASTSIDE RAIL CORRIDOR REGIONAL TRAIL
VOLUME 1 – FINAL MASTER PLAN AND ENVIRONMENTAL IMPACT STATEMENT

KING COUNTY PARKS AND RECREATION DIVISION
JULY 2016

- Final Master Plan and EIS Published July 2016
- Find it online at: www.kingcounty.gov/erc

Corridor Segments

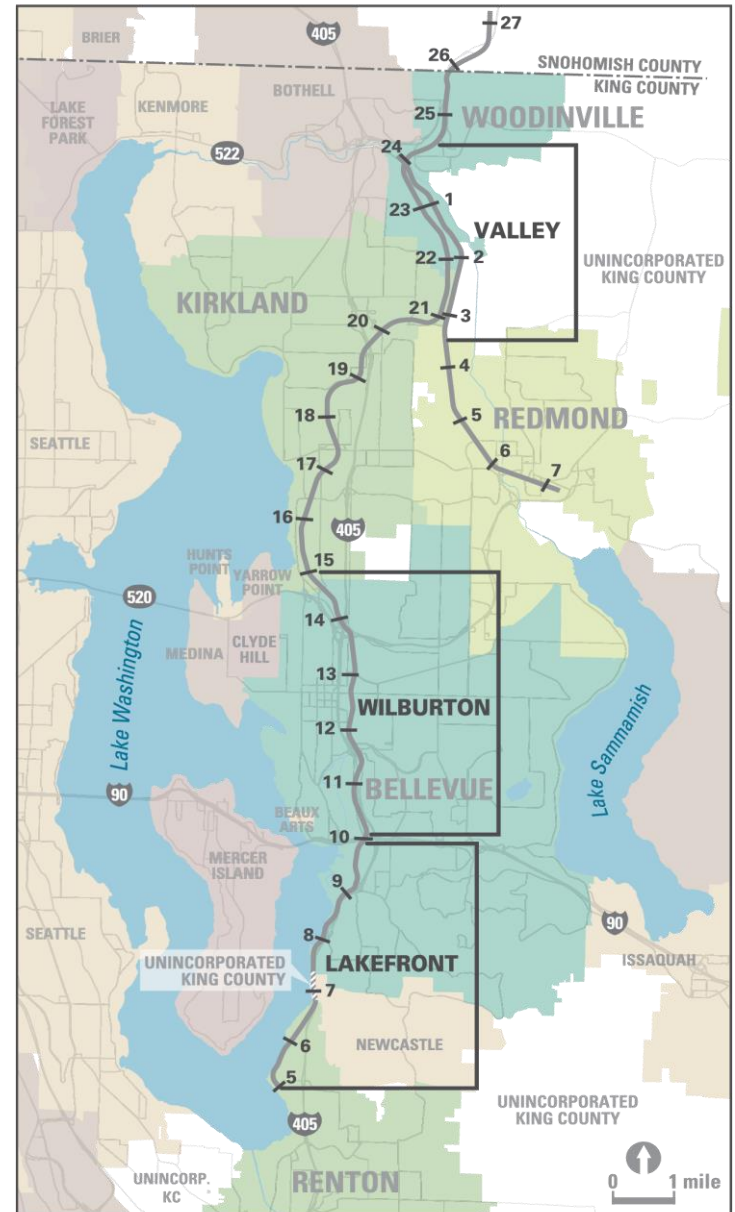
King County Trail Segments:

- **Lakefront – Renton to I-90**
 - Most residential segment with Lake Washington views
 - Connects the Lake Lanes and Newport Shores to Downtown
- **Wilburton – I-90 to 108th Ave NE**
 - Most urban and commercial, major redevelopments
 - Major bridge structures needed
 - Trail alongside East Link Light Rail in northern section
- **Valley – To Woodinville and Spur to Redmond**
 - Most rural and passes through agricultural valley with numerous wineries
 - Connection opportunities between Kirkland and Redmond

Cross Kirkland Corridor

Redmond Central Connector

EASTSIDE RAIL CORRIDOR SEGMENTS



ERC Trail Cross Section

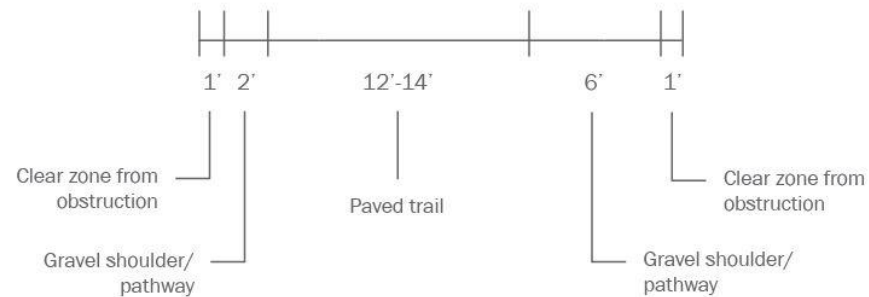


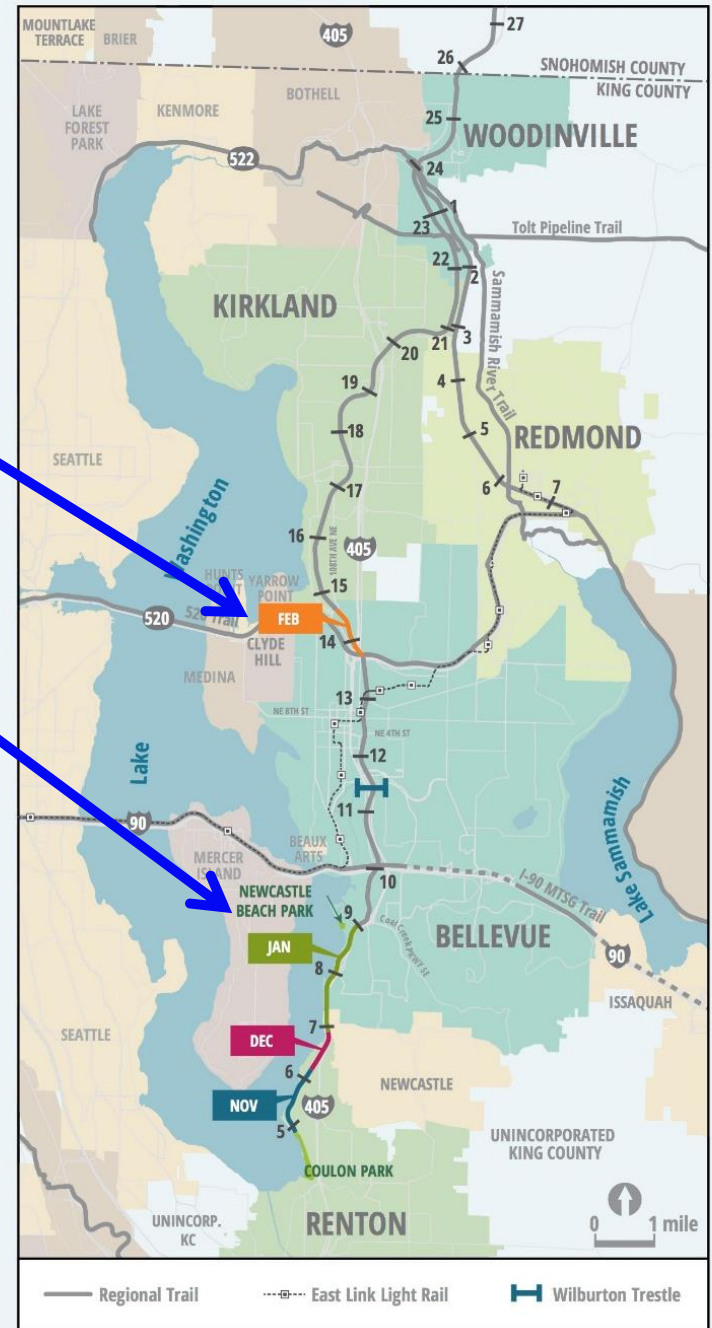
FIGURE 3-4. PREFERRED STANDARD TRAIL CROSS-SECTION

Interim Trail Grand Opening May 2018

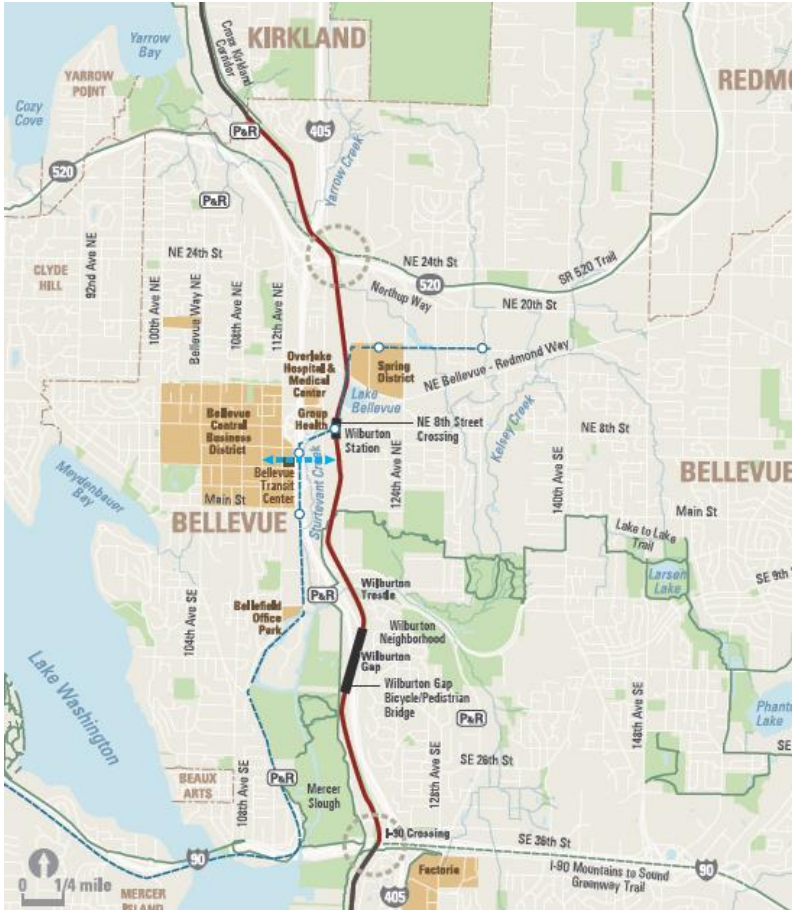
- From Cross Kirkland Corridor at 108th Ave NE to SR 520- 1 Mile KC+1/2 Mile ST to 120th Ave
- From Gene Coulon Park to Newcastle Beach Park- 4 Miles



Interim trail,
just south of
108th Ave NE



Wilburton Segment Design: 2017-2019



- Most urban and dynamic portion of the trail including:
 - *Historic Wilburton Trestle*
 - *Connections to SR 520 and I-90 Trails*
 - *Major crossings and bridges over I-90, I-405, NE 8th Street and others*
 - *At the heart of the redeveloping Wilburton area*
 - *Connections to East Link Light Rail Stations, Spring District*
- **Public and stakeholder engagement throughout 2018**



Northup Way and 520 Trail Connector

- Will Link to East-West SR520 Bike Trail/ Northup Way Bike Lanes
- Connection to 116th Ave NE and Downtown Bellevue



ERC Trail and the Spring District



ERC Trail at the Sound Transit Operations and Maintenance Facility East (OMF-E)



Spring District, Wright Runstad



Global Innovation Exchange (GIX)

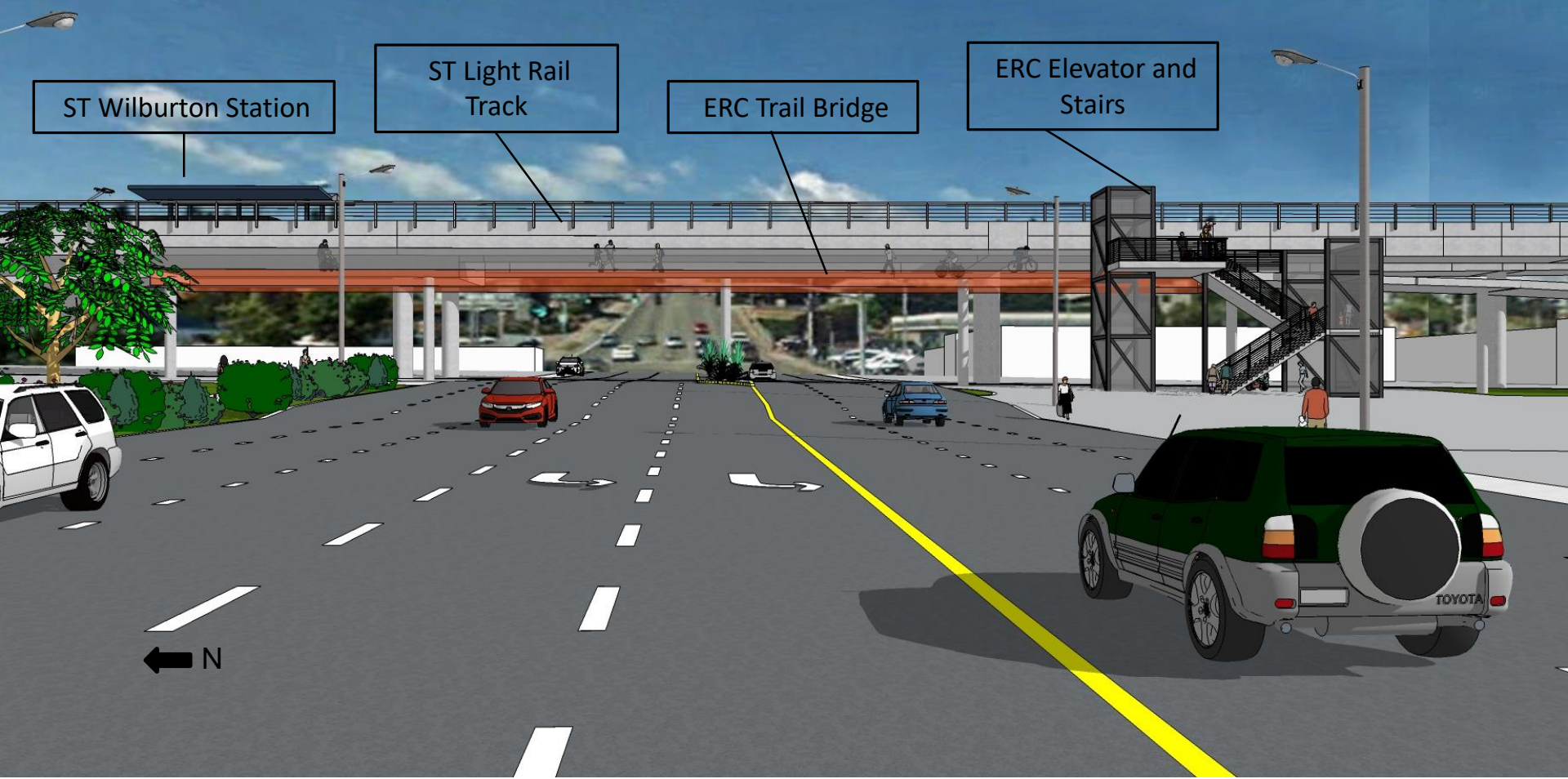


REI Headquarters Rendering – Bellevue Spring District

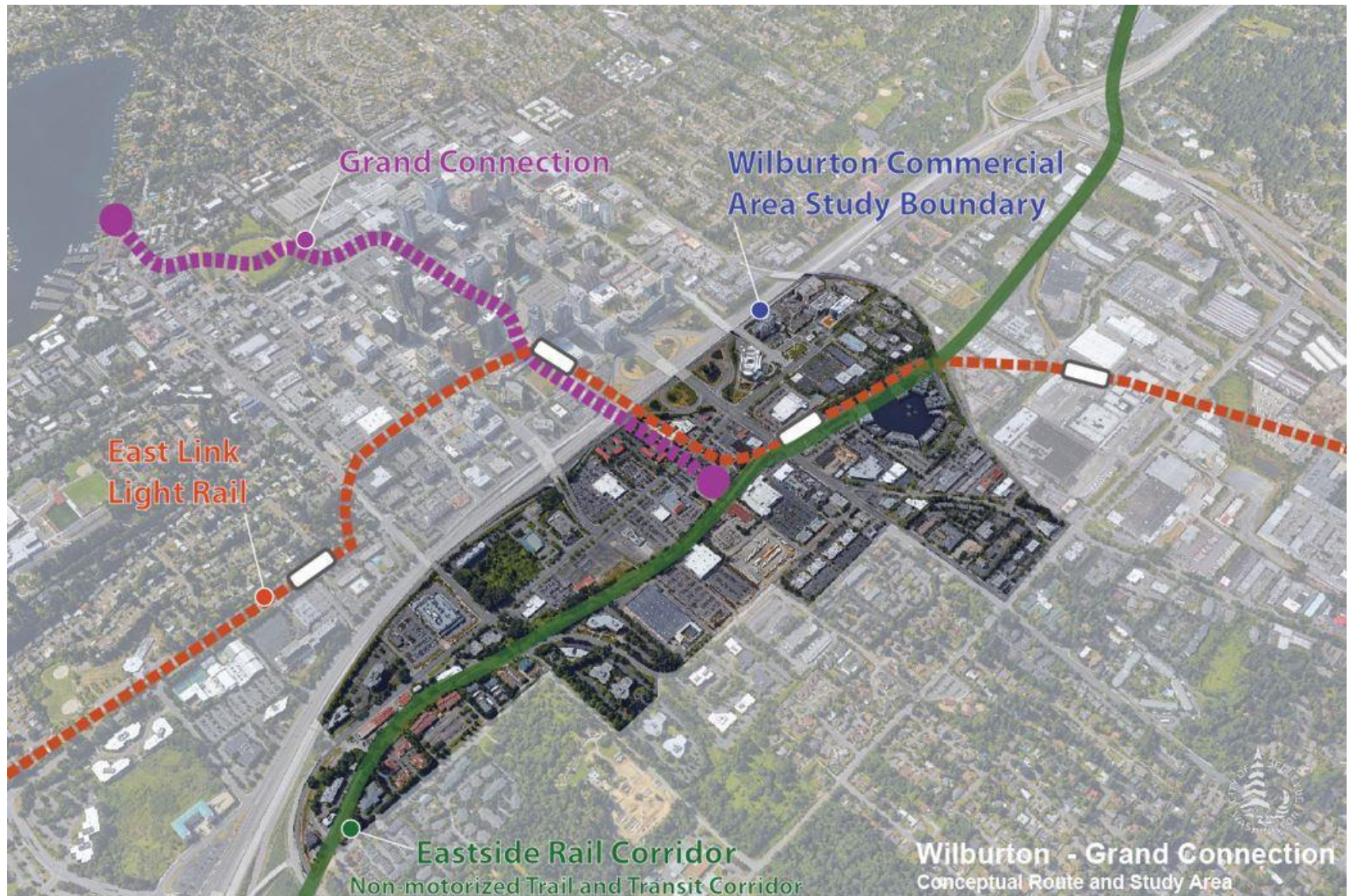
NE 8th Street Crossing Design: 2017-2019



NE 8th Street Crossing Design: 2017-2019



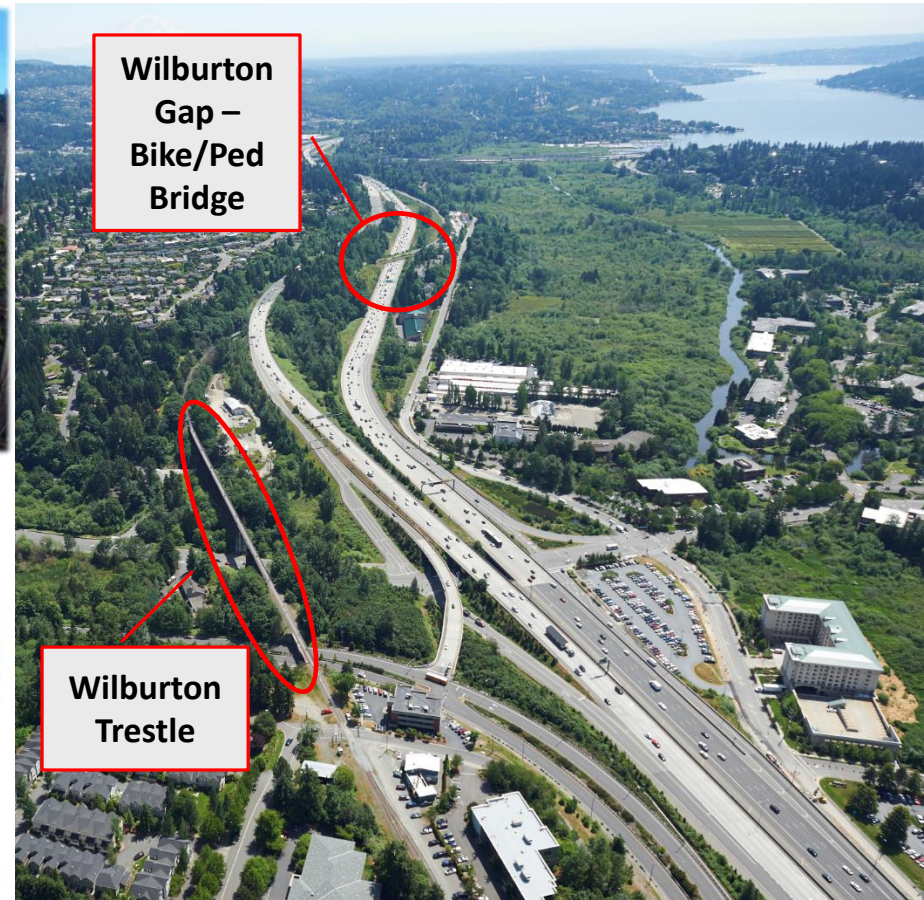
ERC: The Spine through Bellevue's Wilburton District



ERC and the Grand Connection



Wilburton Trestle and I-405 Crossing



**Wilburton
Gap –
Bike/Ped
Bridge**

**Wilburton
Trestle**

I-405 and the Lake Washington Loop Trail

- 2.5 miles of trail in the ERC between Coal Creek Parkway and Ripley Lane
- Anticipated construction July 2019 – December 2020



Questions?

Erica Jacobs

erica.jacobs@kingcounty.gov

Curt Warber

curt.warber@kingcounty.gov

www.kingcounty.gov/eastsiderailcorridortrail



PARKS

Your Big Backyard

