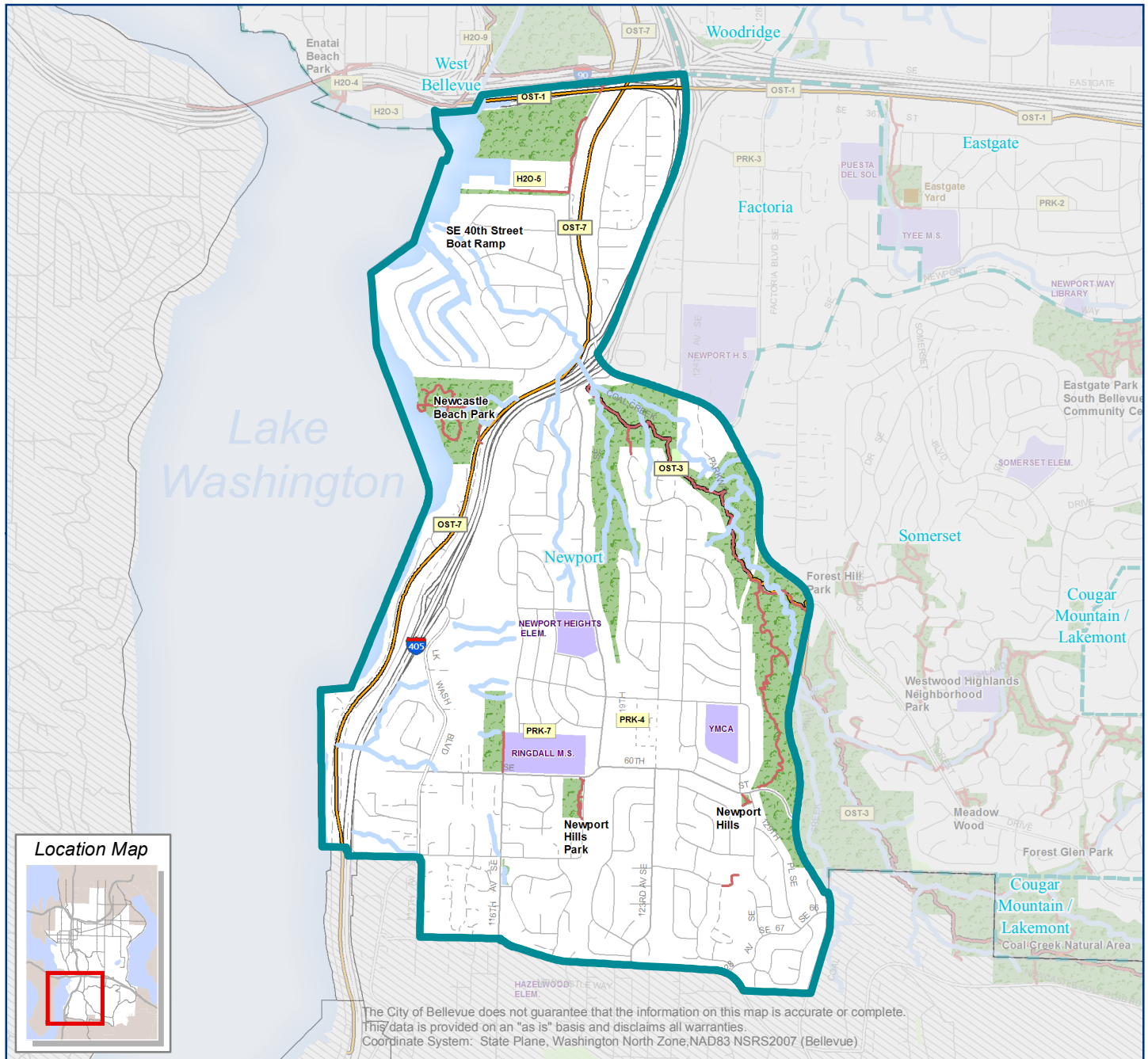


Newport Neighborhood Area



The City of Bellevue does not guarantee that the information on this map is accurate or complete. This data is provided on an "as is" basis and disclaims all warranties. Coordinate System: State Plane, Washington North Zone, NAD83 NSRS2007 (Bellevue)

Current Statistics

Neighborhood Area Size	1,800 Ac
Households for 2015	3,785
Projected Households for 2035	3,790
Public Parks & Open Space	257 Ac
Public Schools/Libraries	38 Ac
Trails	4 Mi

Households within 1/3 mile walking distance to the entrance of:

A Park or Trail	36%
Public School Grounds only	15%

Capital Project Objectives

- OST-1: Mountains to Sound Greenway Trails: Multi-use Connections
- OST-3: S. Bellevue / Coal Creek Greenway Trails: Multi-use Connections
- OST-7: Eastside Rail Corridor Greenway Trails: Multi-use Connections
- PRK-4: Add Neighborhood Park: Newport
- PRK-7: Improve Undeveloped Sites: Newport
- H2O-5: SE 40th Boat Launch Addition

- ABC-12** Capital Project Objectives
- Neighborhood Areas
- Greenway Trail System
- Trails
- City Parks & Open Space
- Other Public Parks
- Public School Property/Libraries
- Private Parks
- City Limits

1 in = 0.46 miles

Source: City of Bellevue, King County, US Census